

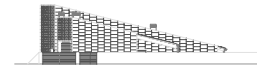
Promotor: JORDI HERNANDO LINARES  
Sup. construïda: 313 m<sup>2</sup>  
Projecte: 2005  
Obra: 2006



Habitatge unifamiliar aïllat. Campdevàno, Girona



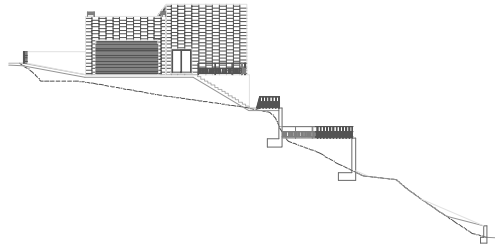
EMPLAÇAMENT



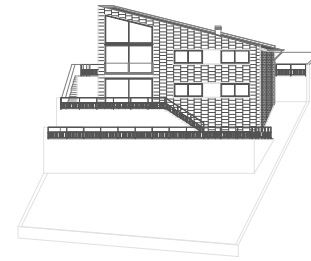
ALÇAT NORD



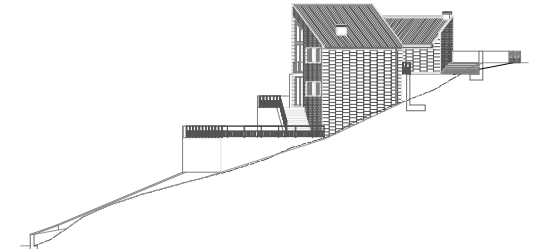
SECCIÓ S1



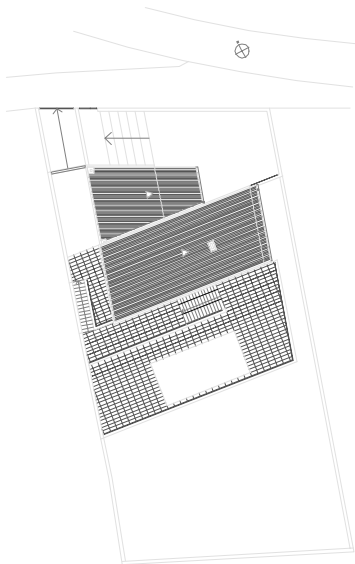
ALÇAT OEST



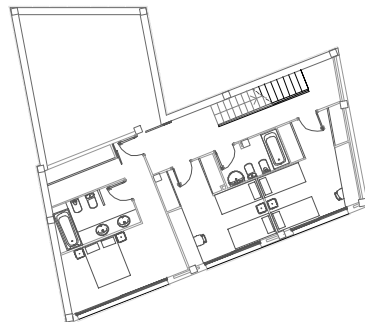
ALÇAT SUD



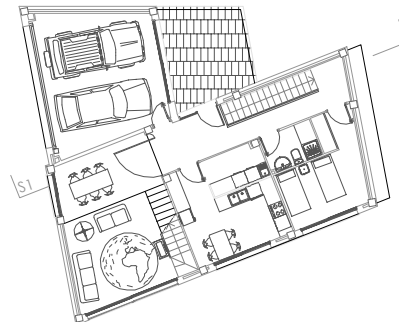
ALÇAT EST



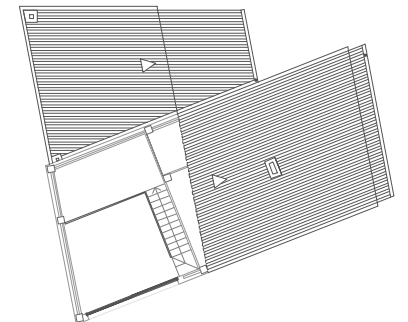
PLANTA COBERTA



PLANTA -1



PLANTA BAIXA



PLANTA +1