

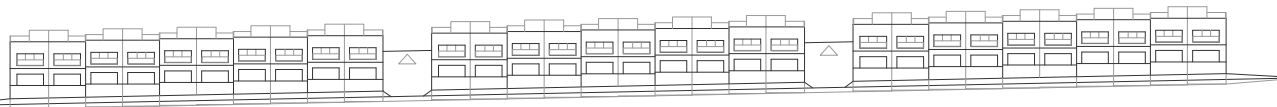
Promotor: COINAGRA S.L.  
Sup. construïda: 30.970 m<sup>2</sup>  
Projecte: 2005  
Obra: —



117 habitatges unifamiliars. Urb. Sant Llorenç, Lloret de Mar, Girona.

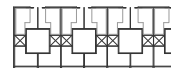


PLANTA GENERAL

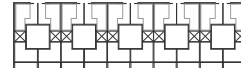


TIPOLOGIES

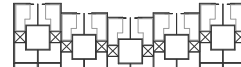
MODUL 7 PECES COBERTA



MODUL 10 PECES COBERTA



MODUL 10 PECES C COBERTA

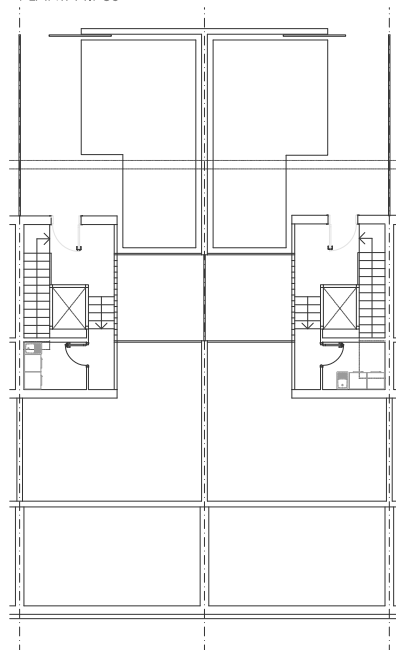


Promotor: COINAGRA S.L.  
Sup. construïda: 30.970 m<sup>2</sup>  
Projecte: 2005  
Obra: —

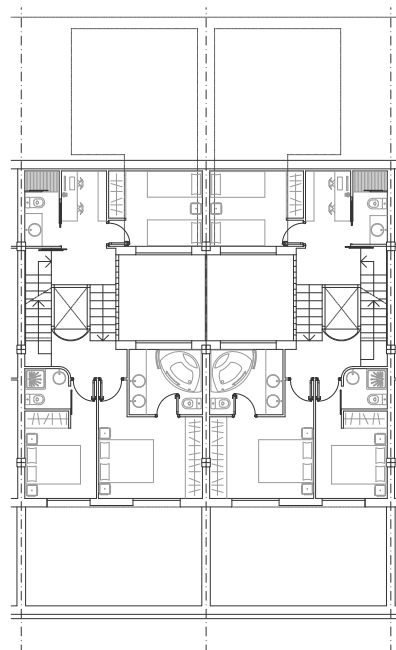


117 habitatges unifamiliars. Urb. Sant Llorenç, Lloret de Mar, Girona.

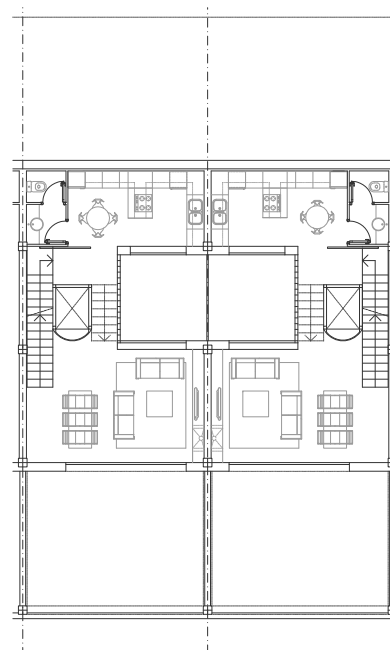
PLANTA TIPUS



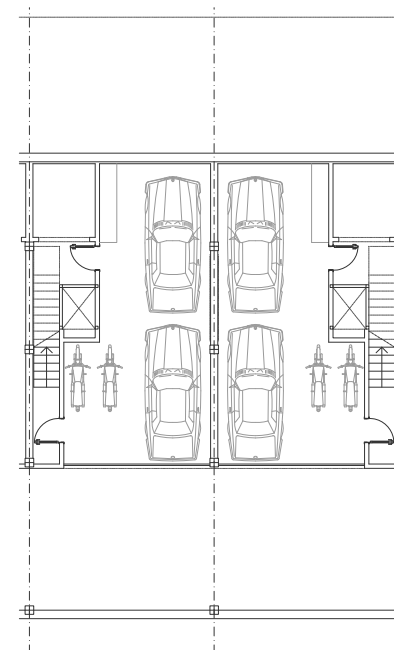
PLANTA COBERTA



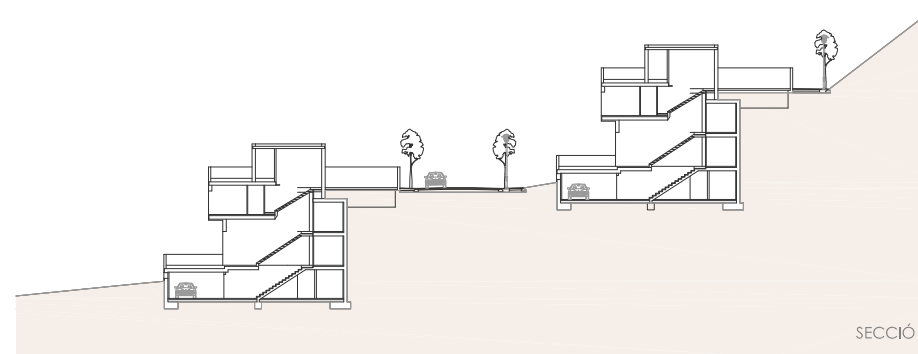
PLANTA SEGONA



PLANTA PRIMERA



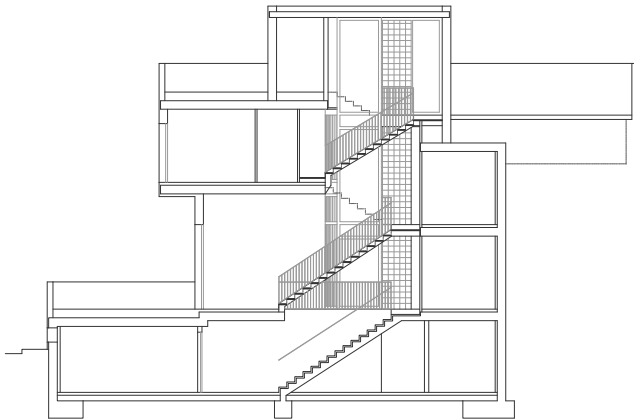
PLANTA GARATGE



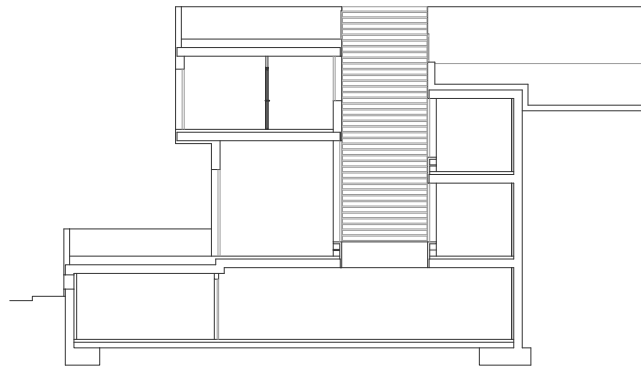
Promotor: COINAGRA S.L.  
Sup. construïda: 30.970 m<sup>2</sup>  
Projecte: 2005  
Obra: —



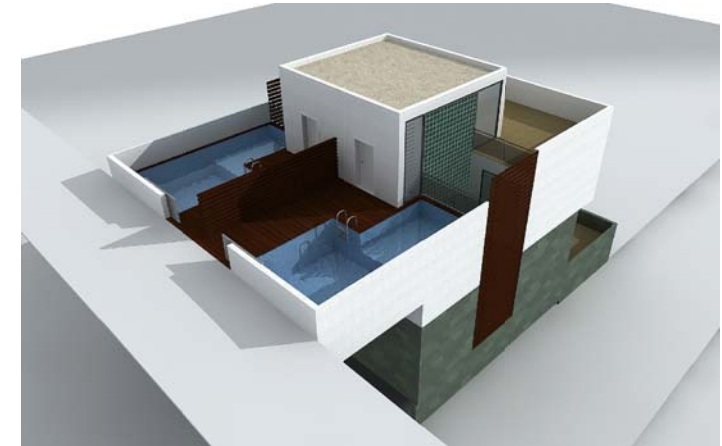
117 habitatges unifamiliars. Urb. Sant Llorenç, Lloret de Mar, Girona.



SECCIÓ 01



SECCIÓ 01



Promotor: COINAGRA S.L.  
Sup. construïda: 30.970 m<sup>2</sup>  
Projecte: 2005  
Obra: —



117 habitatges unifamiliars. Urb. Sant Llorenç, Lloret de Mar, Girona.

# INTERIORS

