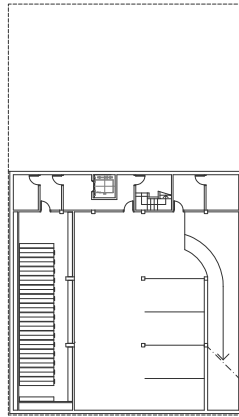


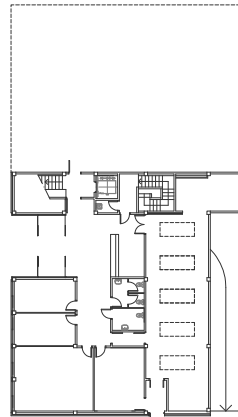
Promotor: CONSELL COMARCAL DEL RIPOLLÈS
Sup. construïda: 1.624,00 m²
Projecte: 1998
Obra: 1999



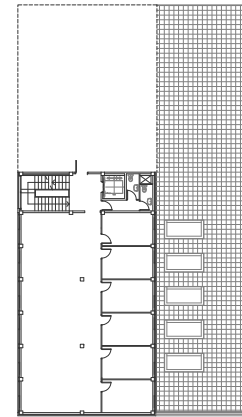
Ampliació Consell Comarcal del Ripollès. Ripoll, Girona.



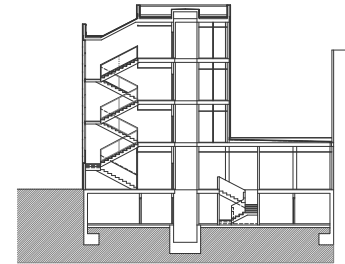
PLANTA SOTERRANI



PLANTA BAIXA



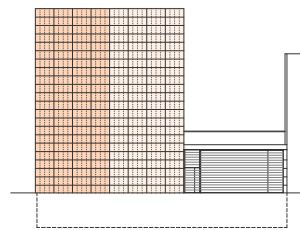
PLANTA TIPUS



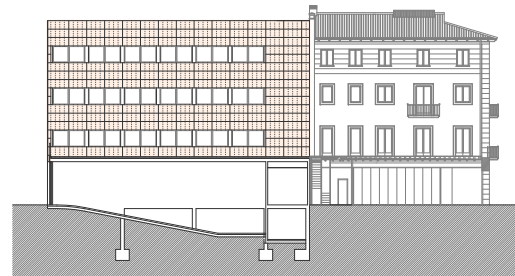
SECCIÓ S2



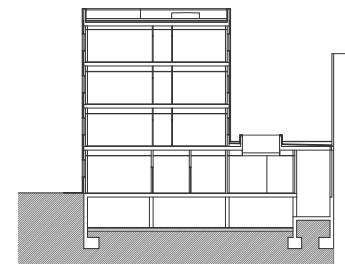
ALÇAT NORD



ALÇAT OEST



ALÇAT SUD



SECCIÓ S1